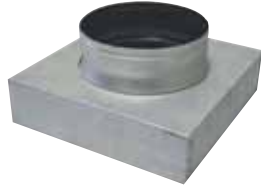


SUBMITTAL DATA

Flexmaster U.S.A.® Square to Round Adapters

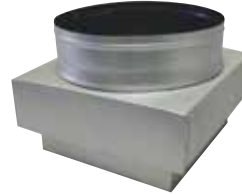
SHEET METAL FITTINGS



Square to Round



Black Interior



2" Oversized
Square to Round

The Flexmaster U.S.A.® Square to Round Adapter is manufactured from 26 gauge, or heavier, galvanized steel to meet SMACNA and UMC Standards for commercial construction.

The Square to Round Adapter is manufactured with a standard black interior, depths of 2", 3" and 4" with an open or closed corner. Custom sizes are available upon request.

The Square to Round Adapter should be installed using SMACNA installation standards.

Fitting	Description
Q2SO	2" Depth, Square, Open Corner
Q2SC	2" Depth, Square, Closed Corner
Q3SO	3" Depth, Square, Open Corner
Q3SC	3" Depth, Square, Closed Corner
Q4SO	4" Depth, Square, Open Corner
Q4SC	4" Depth, Square, Closed Corner

(+/-) 1/8" Tolerance on all Sizes

Standard Features

- Black Interior - 26 gauge only
- 26 Gauge Primed G-90 Galvanized Steel
- 1/8" Tolerance
- Standard Depth Size: 2", 3", 4"
- Open or Closed Corners

Optional Features

- | | |
|---|--|
| <input type="checkbox"/> 24 ga | interior not available |
| <input type="checkbox"/> 22 ga | <input type="checkbox"/> Aluminum |
| <input type="checkbox"/> 20 ga | <input type="checkbox"/> Stainless steel |
| Corner Options: | Size Options: |
| <input type="checkbox"/> Open | <input type="checkbox"/> 2" Oversized |
| <input type="checkbox"/> Closed | |
| Construction Options: | |
| <input type="checkbox"/> All seams sealed | |
| Material Options: black | |

Flexmaster U.S.A.®
5235 Ted Street
Houston, TX 77040 USA
Tel. +1.713.462.7694
Fax +1.713.939.8441
www.FlexmasterUSA.com
www.Masterduct.com

 **FLEXMASTER U.S.A.®**
A MASTERDUCT COMPANY